

DUTCH ARMoured VEHICLES IN BRAZILIAN *SPECIAL POLICE* 1935 – 1947



Expedito Carlos Stephani Bastos
Pesquisador de Assuntos Militares da
Universidade Federal de Juiz de Fora
defesa@ufjf.edu.br

The thirties were marked by several important happenings in Brazil, starting with the 1930 Revolution, and followed by the most remarkable internal conflict, the Civil War of 1932, well-known as the Constitutionalist Revolution. These revolutions are the milestones of the 20th century in Brazil.

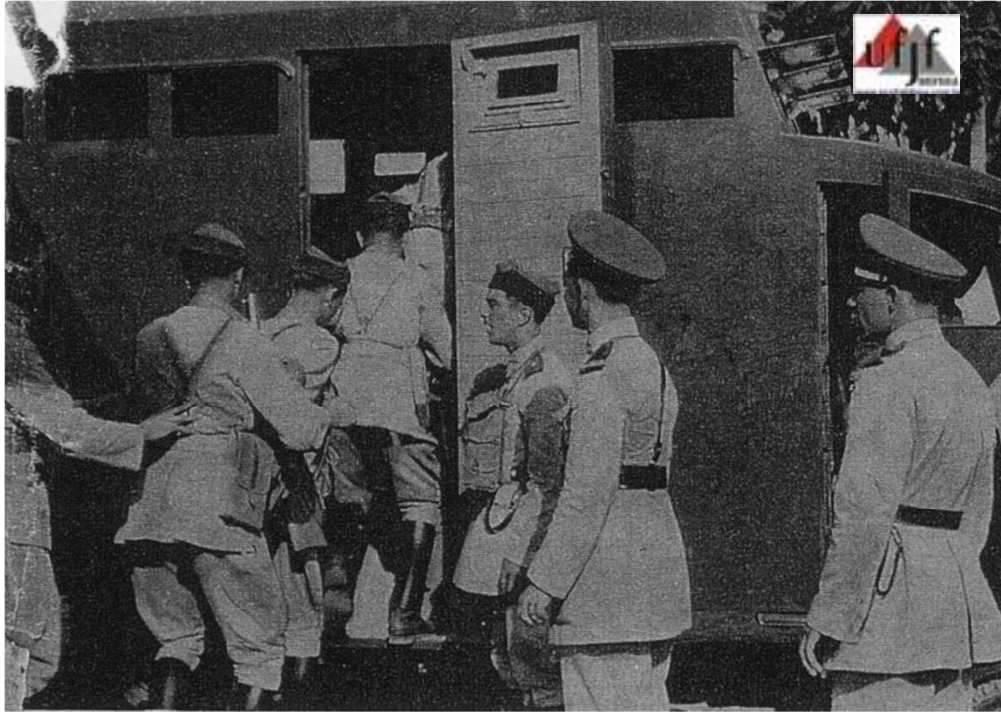
After the Government victory on the Constitutionlists, the Military Public Force of São Paulo was assured. Besides that a Special Police, was established to maintain the public order when the Civil Police and the Public Force were not sufficient enough. Then, the Special Police was put into action. Their units were equipped with German Mauser pistols and Schmeisser machine guns, plus Dutch Wilton-Fijenoord armored vehicles

The Special Police had a division of armored cars composed of a section of assault cars with two Wilton-Fijenoord armored trucks for troop transportation, built by Dutch Shipbuilding Company Wilton-Fijenoord, on the Ford truck chassis, with the capacity to transport 22 men, 14 seated and the others standing on foot, besides the driver and his assistant. These vehicles were armored with steel plates of 4mm thick, with several windows around, and several hatchways.



Two troop armored transportation trucks Wilton-Fijenoord, presented in São Paulo, parade April 1936; Credit for photo: Section of periodics, author's library.

The steel plates protect them from small caliber projectiles. On the other hand, they could answer from the inside and even to disembark troops for immediate action against demonstrators. The vehicles were developed to dismiss urban disturbances; they were similar to the ones used by the Militar Polices nowadays, in the country. The engine was a Ford gasoline motor of 8 cylinders, and the tires were bulletproof.



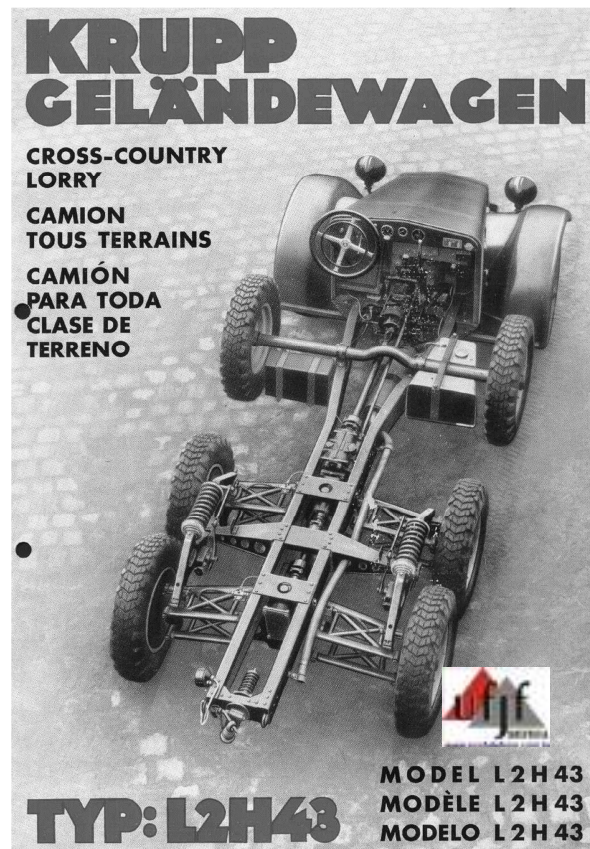
Soldiers embarking on the troop transportation truck Wilton-Fijenoord. Notice the armored door.
Credit for photo: Section of periodics, author's library.



The vehicle ready.

There was other two armored vehicles model Wilton-Fijenoord Police Car, of which just three were built in 1933. Initially, these vehicles were developed to fulfill the needs of the Dutch colonies.

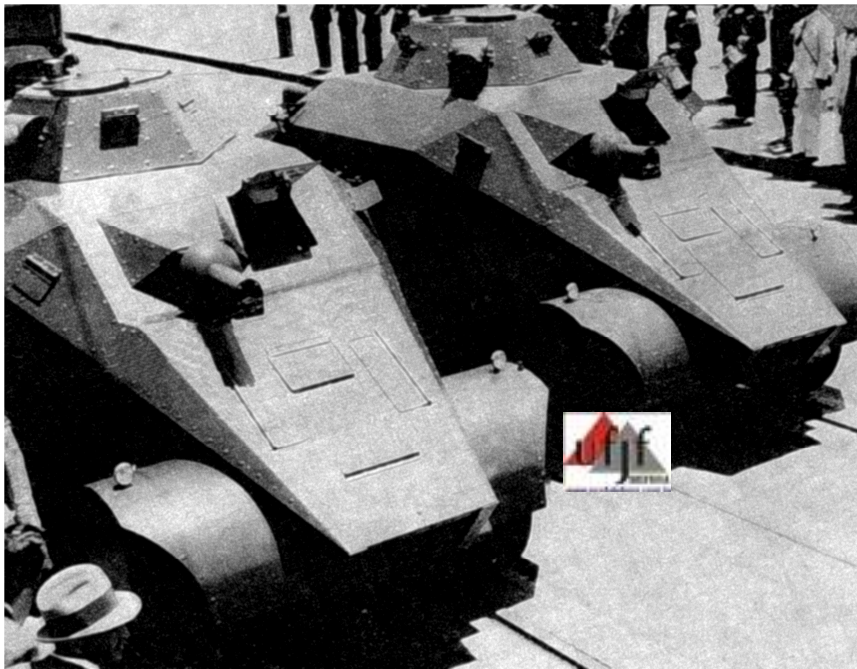
The German truck chassis Krupp Protze L2H43 6x6 was chosen with modifications done by the Dutch manufacturer. An armored structure was built on this chassis. It was of an advanced conception for the time, with 3 to 10mm of thick steel plates, with excellent ballistic angles, with a 360° rotative tower and armed with three machine guns, being one in the tower, one in the rear and the other in front, with several hatchways for observation. It also had an electric fan for gas extraction after shooting. To avoid the demonstrators could turn down this armored, electric discharges would happen if someone would touch it.



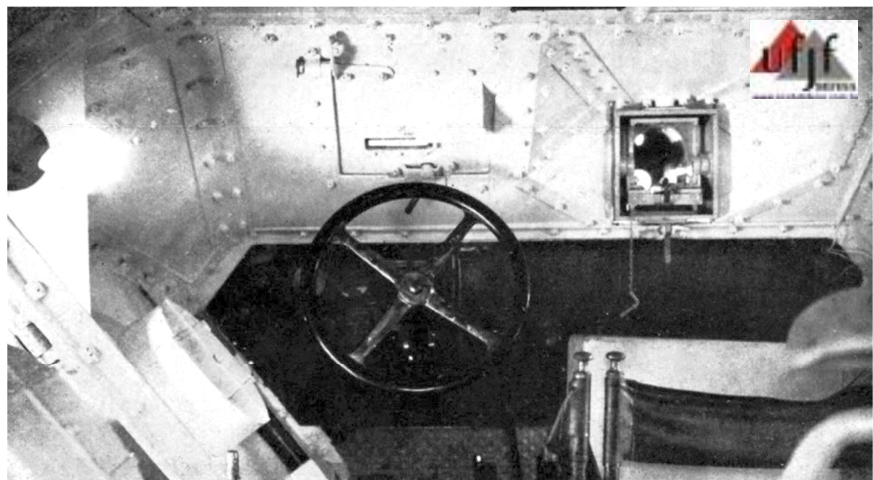
Truck Chassis Krupp-Protze L2H43 used in Wilton-Fijenoord Police Car. Credit for photo: Catalog Krupp, 1938. Author's collection.

Two of the three vehicles produced were sent to the Oriental Dutch India's in 1934. After exhaustive tests, they still showed some deficiencies, because they were too heavy for the roads there, and the motor heating was excessive, forcing the use of aircraft gasoline instead of the common gasoline. They were then returned to the company that had built them.

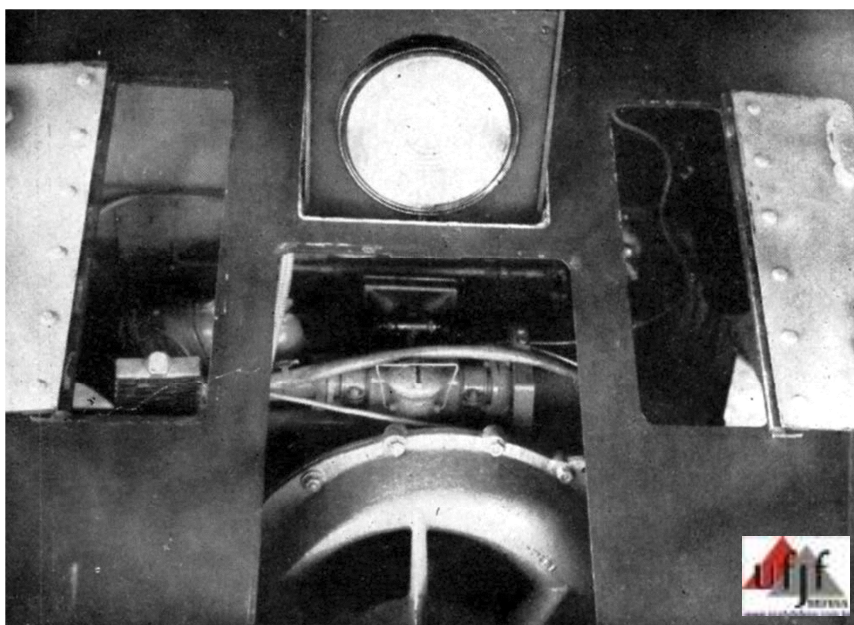
In February 1935 these two vehicles were sold to the Brazilian government and in 1936 were incorporated to The Special Police of São Paulo, with important modifications. The three machine guns were replaced by a device to shoot lachrymatory gas or flames on the demonstrators. The armored tires were bulletproofed.



Two armored Wilton-Fijenoord Police Car parading in São Paulo, April 1936. Credit for photo: Section of periodics, author's library.



Detail from the driver's compartment. Credit for photo: Section of periodics, author's library.



Detail headlight and access hatches to the engine on the front of the vehicle. Credit for photo: Section of periodics, author's library



Effective Special Police of São Paulo to the side of an armored Wilton-Fijenoord Police Car in the 1940s. Photo credit: File Canavó



Rebuilding done by the author in the 1:35 scale of Wilton-Fijenoord Police Car. Credit for photo: author's collection

The third vehicle was kept in the Dutch factory up to 1938, when it was sold to the Dutch army and incorporated to the Artillery Mobile Body on June, 1st. During the Second World War, in May 1940, the Dutch army was defeated by the Germans, who captured this vehicle

In 1944 when the German troops started to be withdrawn from Holland, this vehicle that had already been incorporated to the German army was taken carried to Germany, among others. In 1945 it was used in the defense of Berlin, then being destroyed by the Russian army in the Reich Chancellery internal patio, where it had been used with other vehicles in their hopeless defense.



Wilton-Fijenoord Police Car destroyed in Reich Chancellery internal patio, Berlin – 1945. Credit for photos: Bundesarchiv and Life.





Wilton-Fijenoord Police Car destroyed in Reich Chancellery internal patio, Berlin, June 1945.
Credit for photos: Bundesarchiv and Life.

The drawing of Wilton-Fijenoord Police Car was such a revolutionary one, that inspired the Krupp factory to develop a similar armored in 1938, denominated Krupp Polizei-Streifenwagen, used by the German Armed forces during the Second World War.



Armored Krupp Polizei-Streifenwagen, very similar to Wilton-Fijenoord Police Car. The drawing of Police Car was such a revolutionary, one that inspired Krupp factory of German to develop a similar vehicle in 1938. Credit for photo: Catalog Krupp, 1938. Author's collection.

The Special Police of São Paulo was liquidated on September 8, 1947, by Decree 17.542. Its members were incorporated into the Civil Guard in 1949. Everything indicates that their armored vehicles were scrapped due to age.

Technical data of Wilton-Fijenoord Police Car:

Manufacturer: Dutch Shipbuilding Company Wilton-Fijenoord

Length: 5,06m

Width: 2,20m

Height: 2,30m

Weight: 4.500 Kg

Motor: 4 cylinders, 60 HP, gasoline.

Speed maxim: 70Km/h

Autonomy: 250km

Fuel capacity in the reservoir: 65 liter